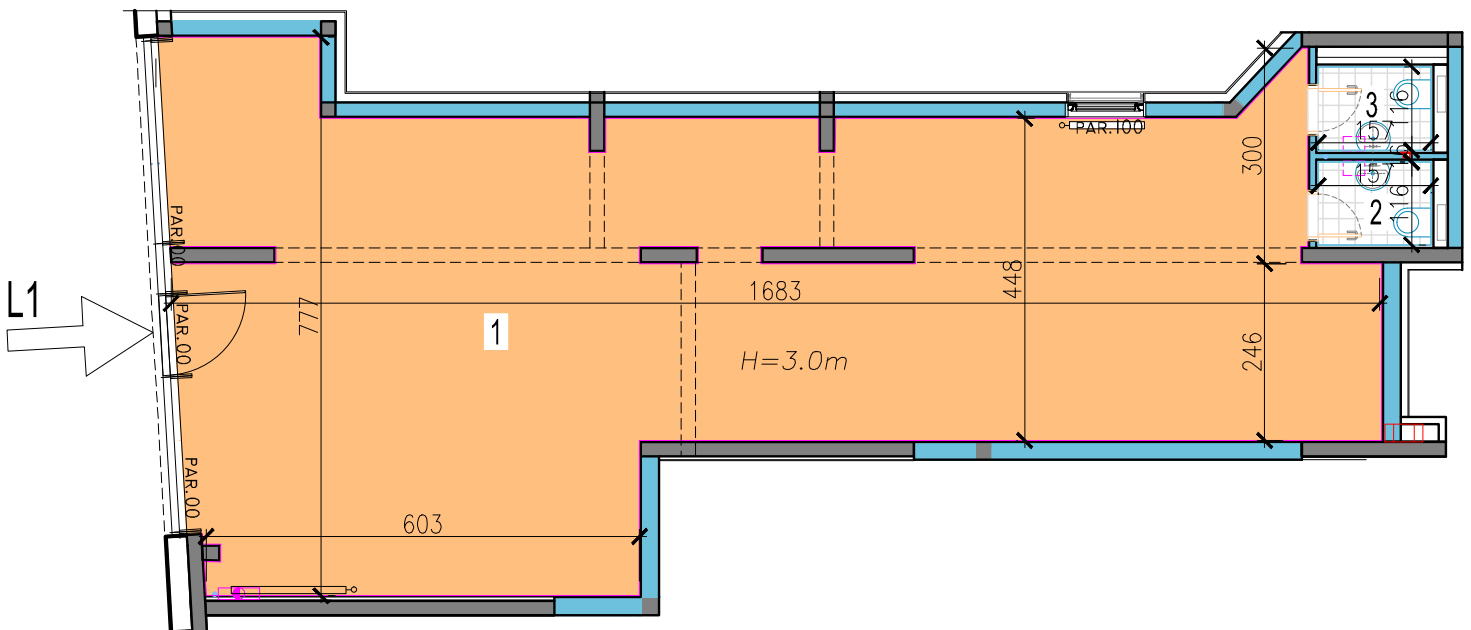
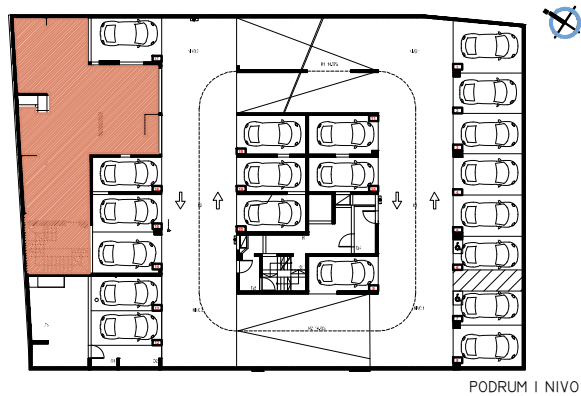
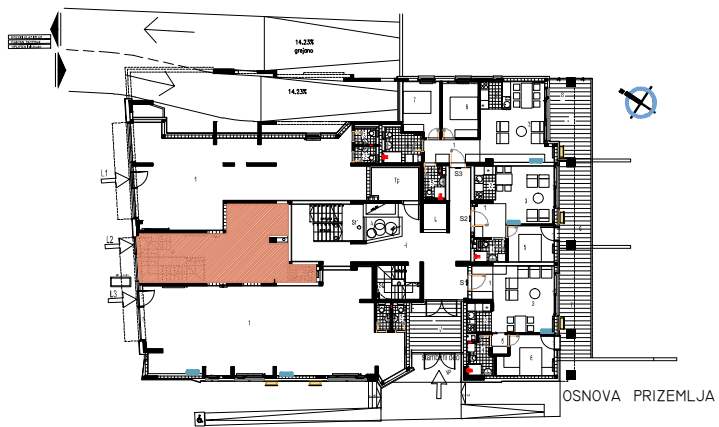


PRIZEMLJE-LOKAL L1

- 1. POSLOV.PROSTOR....88.54M2
- 2. TOALET.....1.81M2
- 3. TOALET..... 1.83M2

UKUPNA POVRSINA.....92.18M2





PODRUM I NIVO-LOKAL L2

- 1. POSLOV.PROSTOR....97.59M2
- 2. STEPENISTE.....15.74M2

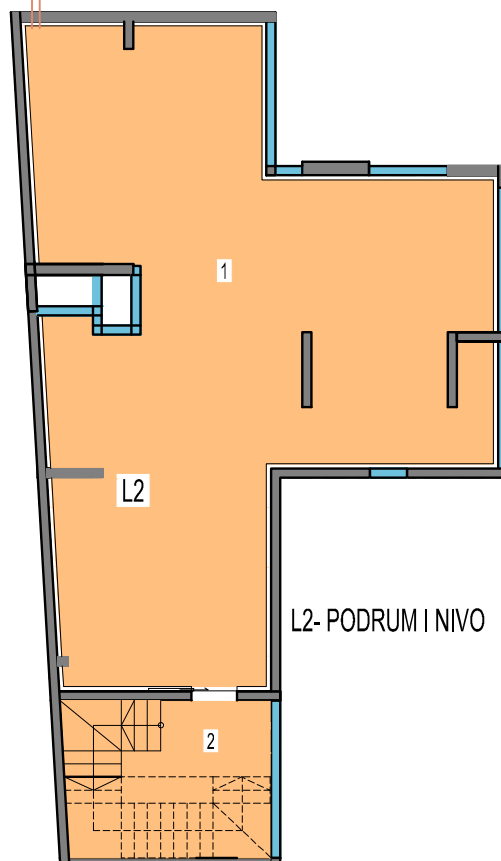
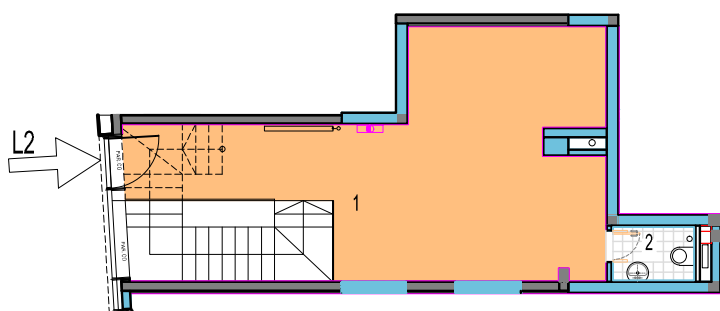
UKUPNA POVRSINA.....113.33M2

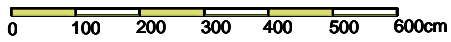
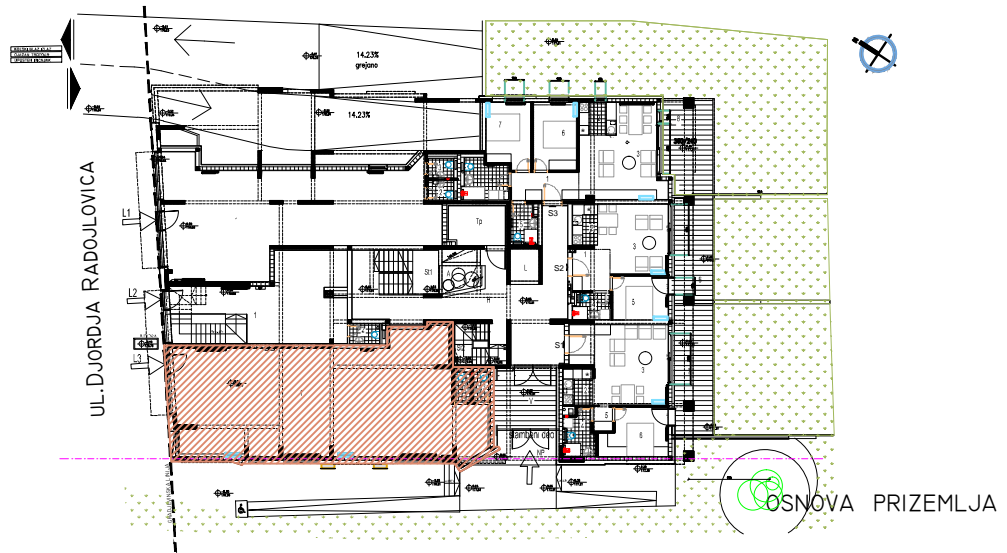
PRIZEMLJE-LOKAL L2

- 1. POSLOV.PROSTOR....36.95M2
- 2. TOALET.....2.10M2

UKUPNA POVRSINA.....39.05M2

L2-PODRUM+PR.....152.38M2





PRIZEMLJE-LOKAL L3

- 1. POSLOV.PROSTOR.....117.29M²
- 2. TOALET.....1.76M²
- 3. TOALET.....1.76M²

UKUPNA POVRšina.....120.81M²

