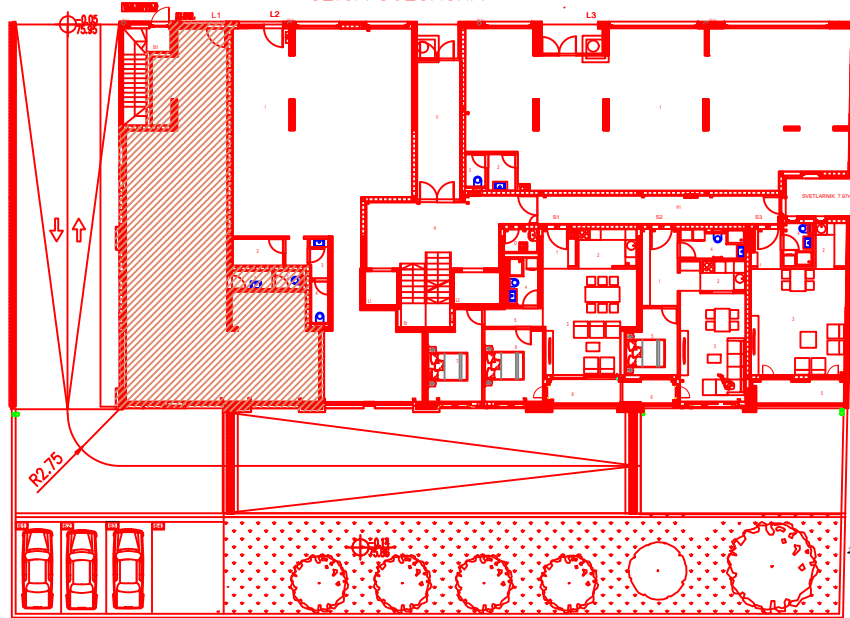
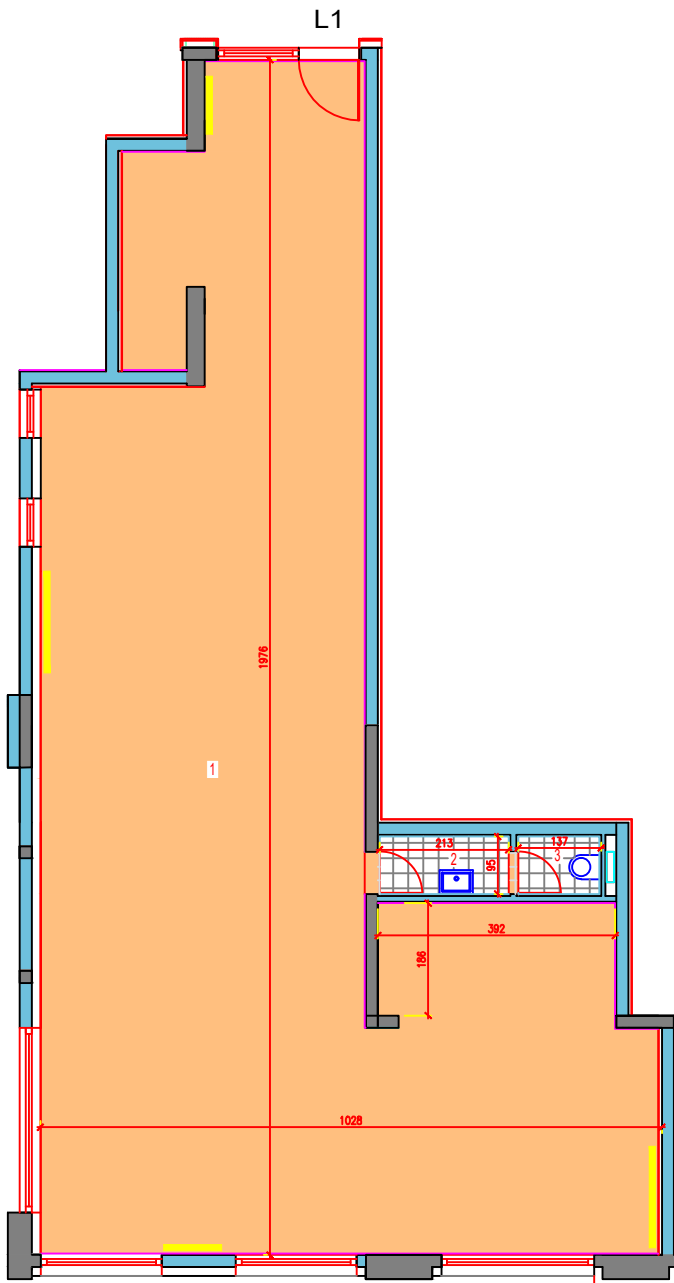


ULICA SOLUNSKA



OSNOVA PRIZEMLJA

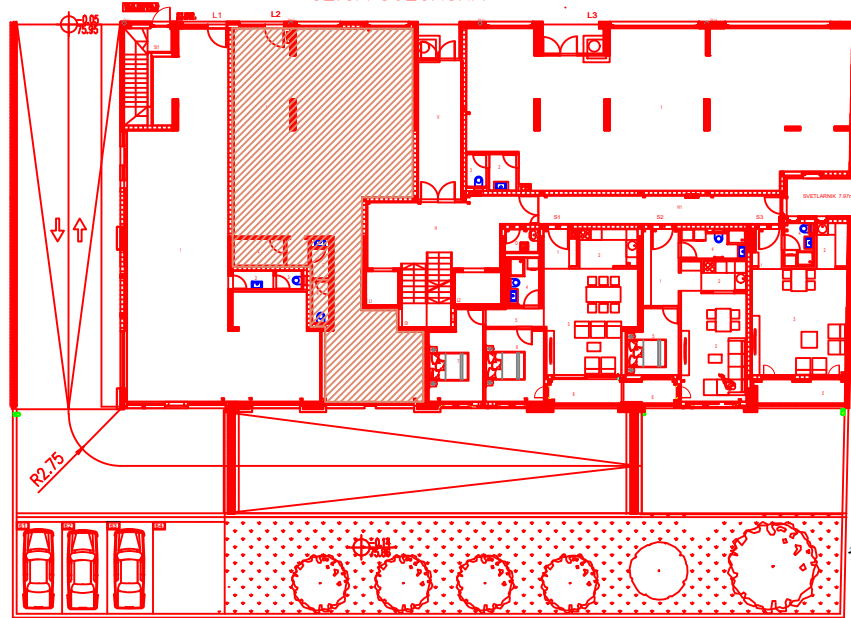
0 100 200 300 400 500 600cm



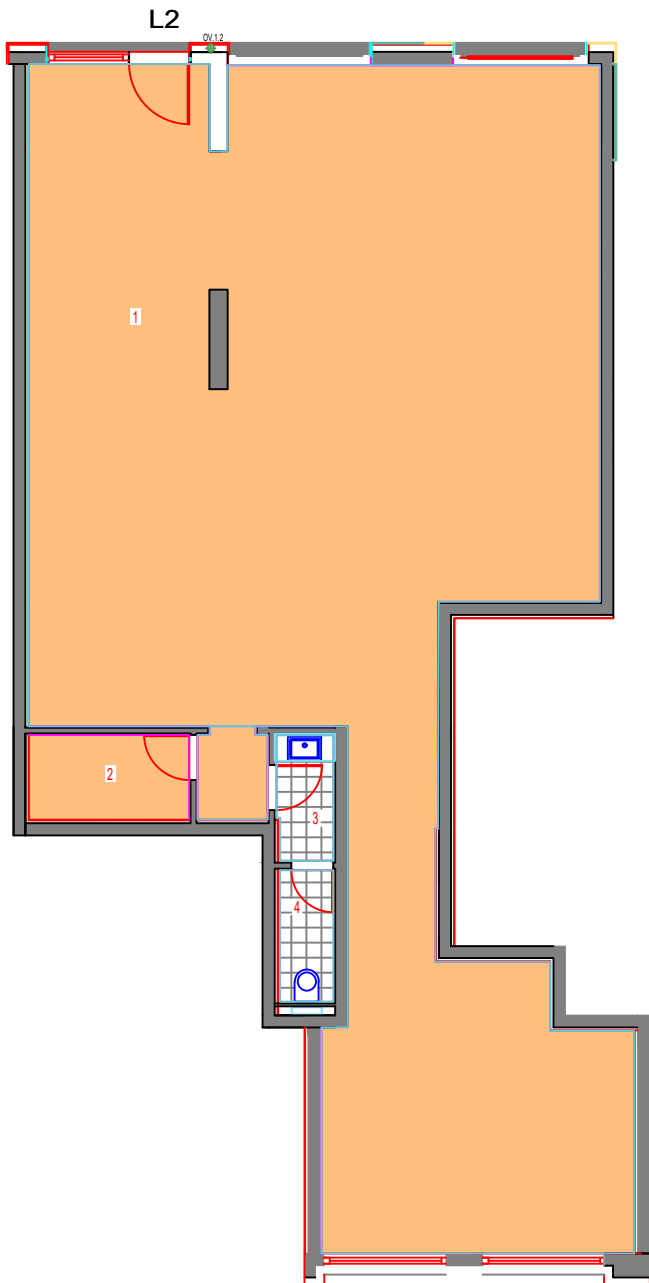
PRIZEMLJE LOKAL I

I.POSLOVNI PROSTOR...122.62M²
2.PREDPROSTOR.....2.02M²
3.WC.....1.27M²
UKUPNA POVRšina.....125.91M²

ULICA SOLUNSKA



0 100 200 300 400 500 600cm



PRIZEMLJE LOKAL 2

1. POSLOVNI PROSTOR...	127.28M ²
2. OSTAVA.....	3.75M ²
3. UMIVAONIK.....	1.92M ²
UKUPNA POVRšina.....	134.87M ²