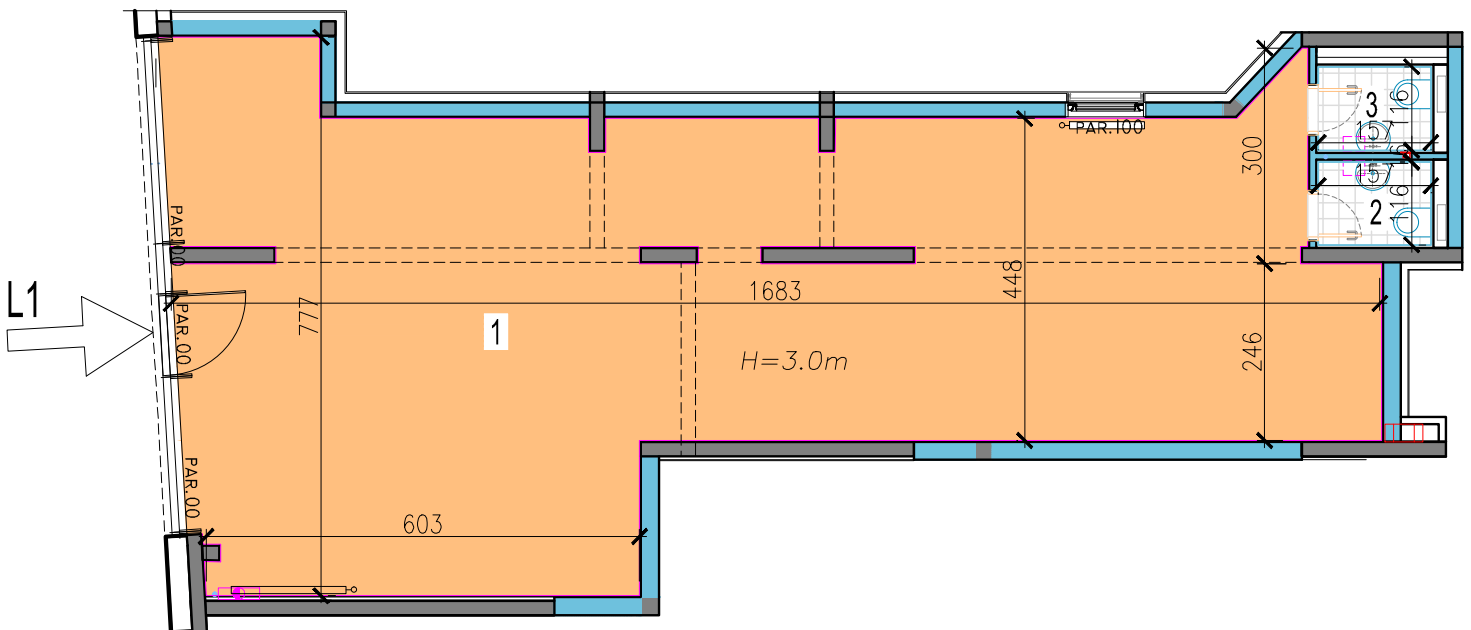
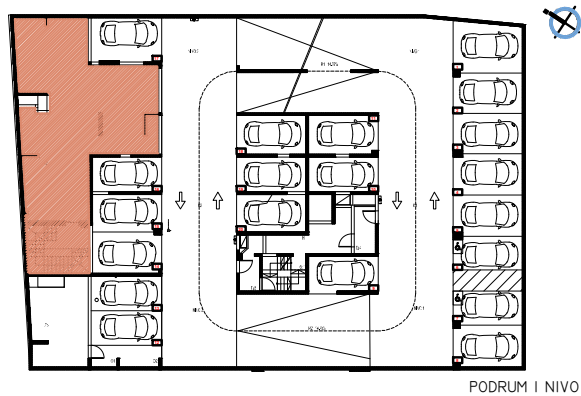
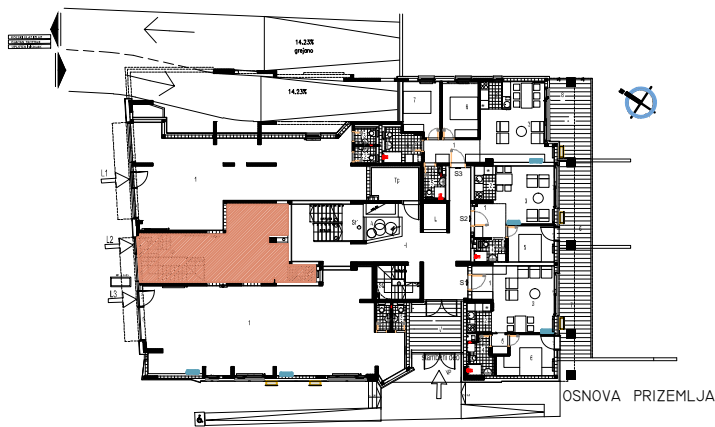


PRIZEMLJE-LOKAL L1

- 1. POSLOV.PROSTOR....88.54M2
- 2. TOALET.....1.81M2
- 3. TOALET..... 1.83M2

UKUPNA POVRSINA.....92.18M2





PODRUM I NIVO-LOKAL L2	
1. POSLOV.PROSTOR....	97.59M2
2. STEPENISTE.....	15.74M2

UKUPNA POVRSINA.....	113.33M2

PRIZEMLJE-LOKAL L2	
1. POSLOV.PROSTOR....	36.95M2
2. TOALET.....	2.10M2

UKUPNA POVRSINA.....	39.05M2

L2-PODRUM+PR.....152.38M2

